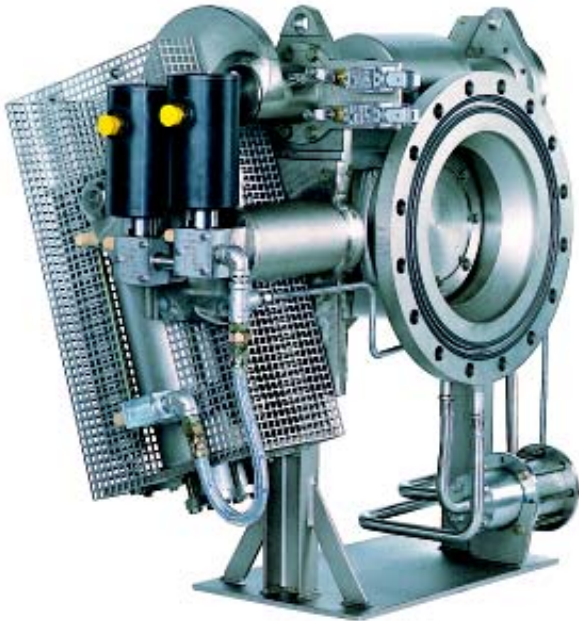


# Gaseous Fuels

## Safety Shut-off Flap Valve



### Application

Building shut-off butterfly valve on the reactor containment in nuclear power plants

Nominal diameter: 200 to 1200  
Operating pressure: up to 10 bar  
Operating temperature: -15 °C to 200 °C

### Technical Data

Valve body: Welded steel construction  
Corrosion protection: All steel components are chemically nickel plated  
Sealing: Double seals with test connection  
Actuator: Pneumatic piston actuator with closing springs  
Control: Redundant via 3/2-way solenoid valve  
Other materials and design variants available on request.