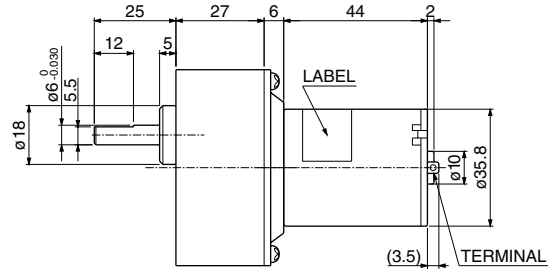
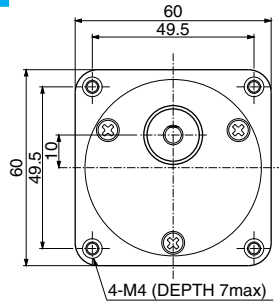
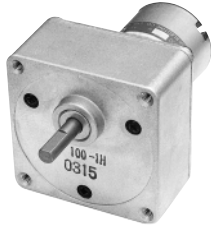


BE

TG-85B
TG-85C
TG-85E



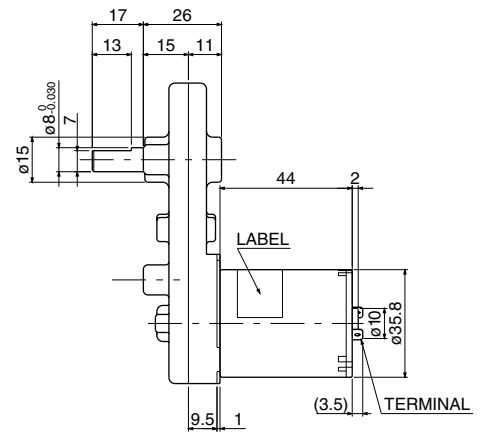
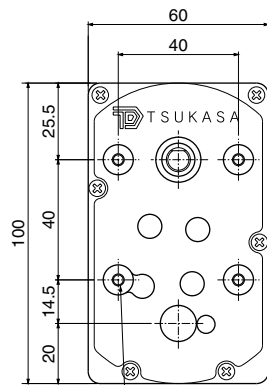
Allowable torque-speed characteristics

MODEL	GEAR RATIO	1	1	1	1	1	1	1	1	1	1	1	1	1	1	1	
		5	10	12.5	15	18	25	30	50	75	100	150	200	300	500	750	1000
TG-85B-BE (12V)	SPEED(r/min)	926	448	354	295	247	185	148	89.7	59.6	44.5	30.3	23.7	16.1	10	6.8	5.1
	TORQUE(mN-m)	39.2	88.2	117.6	127.4	147	196	245	392	539	735	980	980	980	980	980	980
	TORQUE(kg-cm)	0.4	0.9	1.2	1.3	1.5	2	2.5	4	5.5	7.5	10	10	10	10	10	10
TG-85C-BE (24V)	SPEED(r/min)	922	447	354	294	247	185	148	89.5	59.6	44.4	30.2	23.5	16	9.9	6.7	5.1
	TORQUE(mN-m)	39.2	88.2	117.6	127.4	147	196	245	392	539	735	980	980	980	980	980	980
	TORQUE(kg-cm)	0.4	0.9	1.2	1.3	1.5	2	2.5	4	5.5	7.5	10	10	10	10	10	10
TG-85E-BE (24V)	SPEED(r/min)	1321	643	510	425	356	267	214	129	85.6	64.1	43.3	33.3	22.4	13.8	9.3	7
	TORQUE(mN-m)	39.2	88.2	117.6	127.4	147	196	245	392	539	735	980	980	980	980	980	980
	TORQUE(kg-cm)	0.4	0.9	1.2	1.3	1.5	2	2.5	4	5.5	7.5	10	10	10	10	10	10

GEAR RATIO	STAGE	TORQUE (kg-cm)	WEIGHT (g)
1/3~1/12.5	2	10	255
1/15~1/60	3	10	270
1/75~1/250	4	10	285
1/300~1/1000	5	10	300

BG

TG-85B
TG-85C
TG-85E



Allowable torque-speed characteristics

MODEL	GEAR RATIO	1	1	1	1	1	1	1	1	1	1	1	1	1	1	1
		12.5	25	36	60	100	150	200	300	500	700					
TG-85B-BG (12V)	SPEED(r/min)	359	179	124	74.2	44.4	29.5	22.7	16.4	9.7	7.1					
	TORQUE(mN-m)	98	196	294	490	833	1274	1470	980	1960	1960					
	TORQUE(kg-cm)	1	2	3	5	8.5	13	15	10	20	20					
TG-85C-BG (24V)	SPEED(r/min)	358	179	124	74.1	44.3	29.4	22.6	16.2	9.6	7					
	TORQUE(mN-m)	98	196	294	490	833	1274	1470	980	1960	1960					
	TORQUE(kg-cm)	1	2	3	5	8.5	13	15	10	20	20					
TG-85E-BG (24V)	SPEED(r/min)	515	257	178	107	63.9	42.5	32.4	22.7	13.5	9.8					
	TORQUE(mN-m)	98	196	294	490	833	1274	1470	980	1960	1960					
	TORQUE(kg-cm)	1	2	3	5	8.5	13	15	10	20	20					

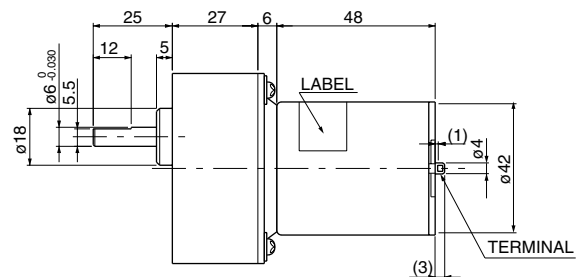
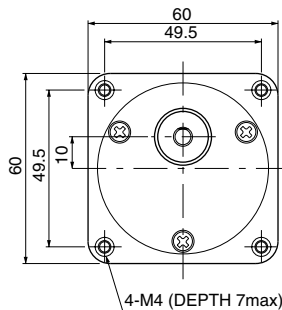
GEAR RATIO	STAGE	TORQUE (kg-cm)	WEIGHT (g)
1/12.5~1/18	3	7	315
1/25~1/90	3	10	315
1/100~1/200	3	15	315
1/250, 1/500, 1/700	4	20	315
1/300	4	10	285

TG-30P/S (11W) COMPACT SIZE, HIGH POWER.

APPLICATION: PRINTER, PLOTTER, HOPPER, GAMING MACHINE, VENDING MACHINE, BANKING MACHINE. etc.

BE

TG-30P/S



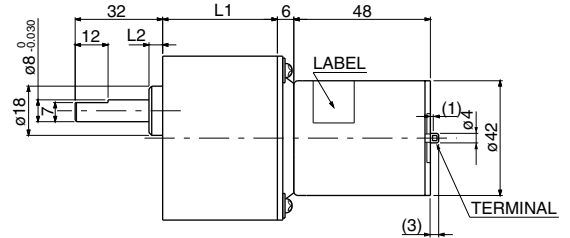
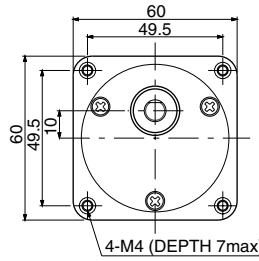
Allowable torque-speed characteristics

MODEL	GEAR RATIO	1	1	1	1	1	1	1	1	1	1	1	1	1	1	1	
		5	10	12.5	15	18	25	30	50	75	100	150	200	300	500	750	1000
TG-30P-BE (24V)	SPEED(r/min)	917	449	368	300	250	188	150	89.8	61.1	47.3	32.6	24.8	16.6	10.1	6.8	5.1
	TORQUE(mN-m)	88.2	186.2	196	245	294	392	490	833	980	980	980	980	980	980	980	980
	TORQUE(kg-cm)	0.9	1.9	2	2.5	3	4	5	8.5	10	10	10	10	10	10	10	10

GEAR RATIO	STAGE	TORQUE (kg-cm)	WEIGHT (g)
1/3~1/12.5	2	10	255
1/15~1/60	3	10	270
1/75~1/250	4	10	285
1/300~1/1000	5	10	300

BM

TG-30P/S



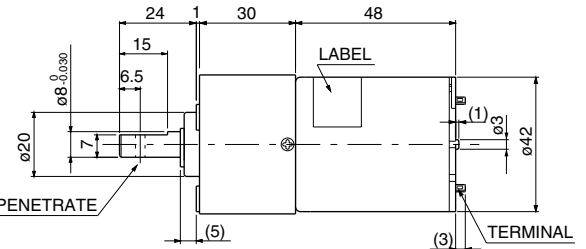
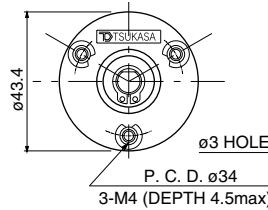
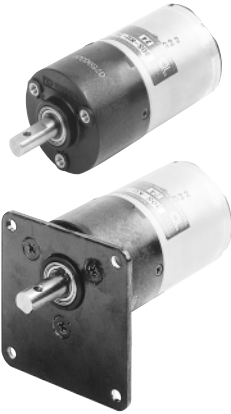
Allowable torque-speed characteristics

MODEL	GEAR RATIO	1	1	1	1	1	1	1	1	1	1	1	1	1
		5	10	12.5	18	25	30	50	75	100	120	150	180	180
TG-30P-BM (24V)	SPEED(r/min)	905	449	368	250	181	150	89.8	60.3	45	37.5	29.9	27	27
	TORQUE(mN-m)	88.2	186.2	196	294	392	490	833	1078	1470	1764	2254	2450	2450
	TORQUE(kg-cm)	0.9	1.9	2	3	4	5	8.5	11	15	18	23	25	25

BM	GEAR RATIO	L1 (mm)	L2 (mm)	STAGE	TORQUE (kg-cm)	WEIGHT (g)
	1/3~1/15	32	3	2	15	310
	1/18~1/60	42	5	3	25	400
	1/75~1/180	42	5	4	25	430

KU

TG-30P/S



Allowable torque-speed characteristics

MODEL	GEAR RATIO	1	1	1	1	1
		24	75	96	144	216
TG-30S-KU (24V)	SPEED(r/min)	189	61.1	49.3	33.9	23.1
	TORQUE(mN-m)	392	980	980	980	980
	TORQUE(kg-cm)	4	10	10	10	10

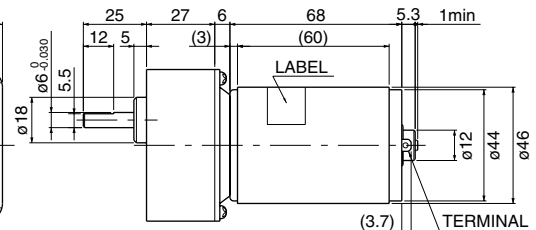
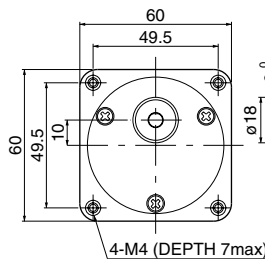
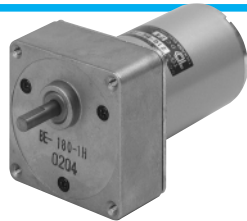
KU	GEAR RATIO	STAGE	TORQUE (kg-cm)	WEIGHT (g)
	1/24	2	10	135
	1/75	3	10	135
	1/96	3	10	135
	1/144	3	10	135
	1/216	3	10	135

TG-21 (13~17W) ø 46, 5 SLOTS, HIGH POWER.

APPLICATION : SPOOL DISPLAY, BANKING MACHINE, SECURITY CAMERA, CUTTER. etc.

BE

TG-30P/S



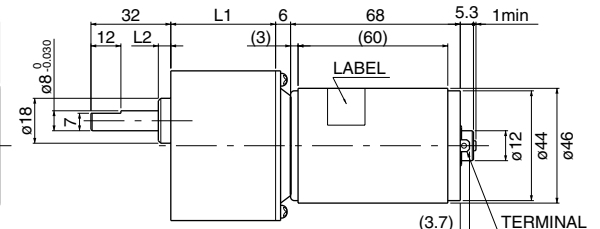
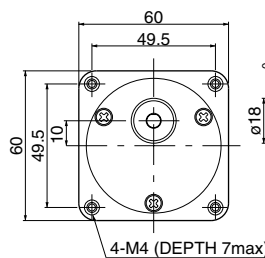
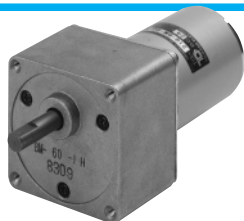
Allowable torque-speed characteristics

MODEL	GEAR RATIO	1	1	1	1	1	1	1	1	1	1	1	1	1	1		
		5	10	12.5	15	18	25	30	50	75	100	150	200	300	500	750	1000
TG-21Q-BE (24V)	SPEED(r/min)	874	434	341	287	240	178	142	86	58.7	44.8	30.4	23	15.3	9.2	6.2	4.6
	TORQUE(mN-m)	107.8	196	294	294	343	490	637	980	980	980	980	980	980	980	980	980
	TORQUE(kg-cm)	1.1	2	3	3	3.5	5	6.5	10	10	10	10	10	10	10	10	10
TG-21R-BE (12V)	SPEED(r/min)	1135	564	444	372	311	232	185	112	76.4	58.3	39.5	29.9	19.9	12	8	6
	TORQUE(mN-m)	107.8	196	294	294	343	490	637	980	980	980	980	980	980	980	980	980
	TORQUE(kg-cm)	1.1	2	3	3	3.5	5	6.5	10	10	10	10	10	10	10	10	10

BE	GEAR RATIO	STAGE	TORQUE (kg-cm)	WEIGHT (g)
	1/3~1/12.5	2	10	255
	1/15~1/60	3	10	270
	1/75~1/250	4	10	285
	1/300~1/1000	5	10	300

BM

TG-30P/S



Allowable torque-speed characteristics

MODEL	GEAR RATIO	1	1	1	1	1	1	1	1	1	1	1	1	1
		5	10	12.5	18	25	30	50	75	100	120	150	180	180
TG-21Q-BM (24V)	SPEED(r/min)	854	434	341	240	172	142	86	57.1	42.8	35.6	28.9	26.1	26.1
	TORQUE(mN-m)	117.6	196	294	343	490	637	980	1372	1862	2254	2450	2450	2450
	TORQUE(kg-cm)	1.2	2	3	3.5	5	6.5	10	14	19	23	25	25	25
TG-21R-BM (12V)	SPEED(r/min)	1109	564	444	311	223	185	112	74.2	55.6	46.3	37.5	33.9	33.9
	TORQUE(mN-m)	117.6	196	294	343	490	637	980	1372	1862	2254	2450	2450	2450
	TORQUE(kg-cm)	1.2	2	3	3.5	5	6.5	10	14	19	23	25	25	25

BM	GEAR RATIO	L1 (mm)	L2 (mm)	STAGE	TORQUE (kg-cm)	WEIGHT (g)
	1/3~1/15	32	3	2	15	310
	1/18~1/60	42	5	3	25	400
	1/75~1/180	42	5	4	25	430