

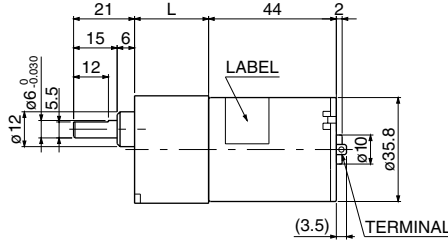
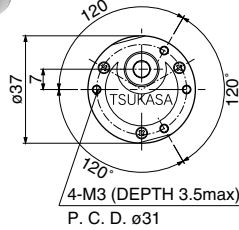
TG-85

(5.4~7.8W) 5 SLOTS, COMPACT SIZE,
HIGH TORQUE WITH LOW NOISE.

APPLICATION: COPY MACHINE, VENDING MACHINE, BANKING MACHINE, PRINTER,
HOPPER, CUTTER, ATM, MEDICAL EQUIPMENT. etc.

SG/SM

TG-85B
TG-85C
TG-85E



GEAR RATIO	L (mm)	STAGE	TORQUE (kg-cm)	WEIGHT (g)
1/5~1/10	20.5	2	1	100
1/12.5~1/30	23	3	2	105
1/36~1/100	25.5	4	3	110
1/120~1/300	28	5	6	115
1/360~1/1000	30.5	6	6	120
1/1500~1/3000	33	7	6	125

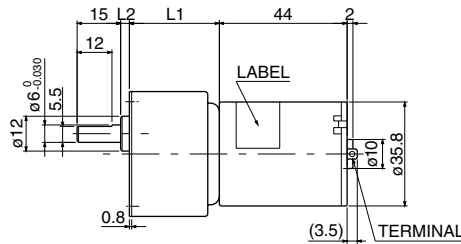
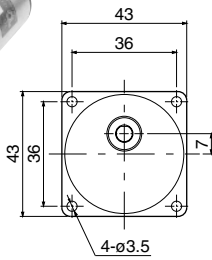
GEAR RATIO	L (mm)	STAGE	TORQUE (kg-cm)	WEIGHT (g)
1/5~1/10	23	2	1	100
1/12.5~1/30	25.5	3	2	105
1/36~1/100	28	4	3	110
1/120~1/300	30.5	5	6	115
1/360~1/1000	33	6	6	120

Allowable torque-speed characteristics

MODEL	GEAR RATIO	1	1	1	1	1	1	1	1	1	1	1	1	1	1	1	1	1	1	1	
		5	10	15	18	25	30	36	50	60	75	100	120	150	200	250	300	500	750	1000	1500
TG-85B-SG (12V)	SPEED(r/min)	913	448	295	247	179	154	125	92.4	78.9	64.6	49.6	38.9	32	24.6	20	16.8	10.3	6.9	5.2	3.5
	TORQUE(mN-m)	39.2	88.2	127.4	147	196	196	245	294	294	294	294	588	588	588	588	588	588	588	588	588
	TORQUE(kg-cm)	0.4	0.9	1.3	1.5	2	2	2.5	3	3	3	3	6	6	6	6	6	6	6	6	6
TG-85C-SG (24V)	SPEED(r/min)	910	447	294	247	179	153	125	91.9	78.3	63.9	49	38.7	31.7	24.3	19.7	16.6	10.1	6.8	5.1	3.4
	TORQUE(mN-m)	39.2	88.2	127.4	147	196	196	245	294	294	294	294	588	588	588	588	588	588	588	588	588
	TORQUE(kg-cm)	0.4	0.9	1.3	1.5	2	2	2.5	3	3	3	3	6	6	6	6	6	6	6	6	6
TG-85E-SG (24V)	SPEED(r/min)	1302	643	425	356	257	219	180	131	111	90.1	68.6	55	44.7	34.1	27.6	23.1	14	9.4	7.1	4.7
	TORQUE(mN-m)	39.2	88.2	127.4	147	196	196	245	294	294	294	294	588	588	588	588	588	588	588	588	588
	TORQUE(kg-cm)	0.4	0.9	1.3	1.5	2	2	2.5	3	3	3	3	6	6	6	6	6	6	6	6	6
TG-85B-SM (12V)	SPEED(r/min)	913	448	295	247	179	154	125	92.4	78.9	64.6	49.6	38.9	32	24.6	20	16.8	10.3	6.9	5.2	—
	TORQUE(mN-m)	39.2	88.2	127.4	147	196	196	245	294	294	294	294	588	588	588	588	588	588	588	588	—
	TORQUE(kg-cm)	0.4	0.9	1.3	1.5	2	2	2.5	3	3	3	3	6	6	6	6	6	6	6	6	—
TG-85C-SM (24V)	SPEED(r/min)	910	447	294	247	179	153	125	92	78.3	64	49	38.7	31.7	24.3	19.7	16.6	10.1	6.8	5.1	—
	TORQUE(mN-m)	39.2	88.2	127.4	147	196	196	245	294	294	294	294	588	588	588	588	588	588	588	588	—
	TORQUE(kg-cm)	0.4	0.9	1.3	1.5	2	2	2.5	3	3	3	3	6	6	6	6	6	6	6	6	—
TG-85E-SM (24V)	SPEED(r/min)	1302	643	425	356	257	219	180	131	111	90.1	68.6	55	44.7	34.1	27.6	23.1	14	9.4	7.1	—
	TORQUE(mN-m)	39.2	88.2	127.4	147	196	196	245	294	294	294	294	588	588	588	588	588	588	588	588	—
	TORQUE(kg-cm)	0.4	0.9	1.3	1.5	2	2	2.5	3	3	3	3	6	6	6	6	6	6	6	6	—

AG/AM

TG-85B
TG-85C
TG-85E



GEAR RATIO	L1 (mm)	L2 (mm)	STAGE	TORQUE (kg-cm)	WEIGHT (g)
1/5~1/10	26	0.5	2	1	90
1/12.5~1/30	26	3	3	2	95
1/36~1/100	26	5.5	4	3	100
1/120~1/300	31	3	5	6	105
1/360~1/1000	31	5.5	6	6	110
1/1500~1/3000	31	8	7	6	115

GEAR RATIO	L1 (mm)	L2 (mm)	STAGE	TORQUE (kg-cm)	WEIGHT (g)
1/5~1/10	26	4	2	1	110
1/12.5~1/18	26	6.5	3	3.5	115
1/25~1/36	26	6.5	3	4	115
1/50~1/75	31	4	4	5	115
1/90~1/150	31	4	4	7	115
1/180~1/500	31	6.5	5	7	120

Allowable torque-speed characteristics

MODEL	GEAR RATIO	1	1	1	1	1	1	1	1	1	1	1	1	1	1	1	1	1	1	1	1
		5	10	15	18	25	30	36	50	60	75	100	120	150	200	250	300	500	750	1000	1500
TG-85B-AG (12V)	SPEED(r/min)	913	448	295	247	179	154	125	92.4	78.9	64.6	49.6	38.9	32	24.6	20	16.8	10.3	6.9	5.2	3.5
	TORQUE(mN-m)	39.2	88.2	127.4	147	196	196	245	294	294	294	294	588	588	588	588	588	588	588	588	588
	TORQUE(kg-cm)	0.4	0.9	1.3	1.5	2	2	2.5	3	3	3	3	6	6	6	6	6	6	6	6	6
TG-85C-AG (24V)	SPEED(r/min)	910	447	294	247	179	153	125	91.9	78.3	63.9	49	38.7	31.7	24.3	19.7	16.6	10.1	6.8	5.1	3.4
	TORQUE(mN-m)	39.2	88.2	127.4	147	196	196	245	294	294	294	294	588	588	588	588	588	588	588	588	588
	TORQUE(kg-cm)	0.4	0.9	1.3	1.5	2	2	2.5	3	3	3	3	6	6	6	6	6	6	6	6	6
TG-85E-AG (24V)	SPEED(r/min)	1302	643	425	356	257	219	180	131	111	90.1	68.6	55	44.7	34.1	27.6	23.1	14	9.4	7.1	4.7
	TORQUE(mN-m)	9.2	88.2	127.4	147	196	196	245	294	294	294	294	588	588	588	588	588	588	588	588	588
	TORQUE(kg-cm)	0.4	0.9	1.3	1.5	2	2	2.5	3	3	3	3	6	6	6	6	6	6	6	6	6
TG-85B-AM (12V)	SPEED(r/min)	913	448	295	247	179	148	124	90.2	74.2	60.6	45.1	38.7	31.8	24.3	19.8	16.7	10.2	—	—	—
	TORQUE(mN-m)	39.2	88.2	127.4	147	196	245	294	343	441	490	686	686	686	686	686	686	686	—	—	—
	TORQUE(kg-cm)	0.4	0.9	1.3	1.5	2	2.5	3	3.5	4.5	5	7	7	7	7	7	7	7	—	—	—
TG-85C-AM (24V)	SPEED(r/min)	910	447	294	247	179	148	124	90	74.1	60.4	45	38.4	31.5	24	19.5	16.5	10.1	—	—	—
	TORQUE(mN-m)	39.2	88.2	127.4	147	196	245	294	343	441	490	686	686	686	686	686	686	686	—	—	—
	TORQUE(kg-cm)	0.4	0.9	1.3	1.5	2	2.5	3	3.5	4.5	5	7	7	7	7	7	7	7	—	—	—
TG-85E-AM (24V)	SPEED(r/min)	1302	643	425	356	257	214	178	129	107	86.5	64.6	54.8	44.6	33.8	27.4	23	14	—	—	—
	TORQUE(mN-m)	39.2	88.2	127.4	147	196	245	294	343	441	490	686	686	686	686	686	686	686	—	—	—
	TORQUE(kg-cm)	0.4	0.9	1.3	1.5	2	2.5	3	3.5	4.5	5	7	7	7	7	7	7	7	—	—	—

